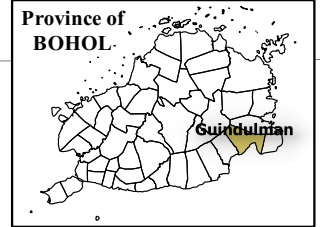


124°23'0" 124°25'0" 124°27'0" 124°29'0" 124°31'0"



Republic of the Philippines
PROVINCE OF BOHOL
City of Tagbilaran



PROVINCIAL PLANNING AND
DEVELOPMENT OFFICE

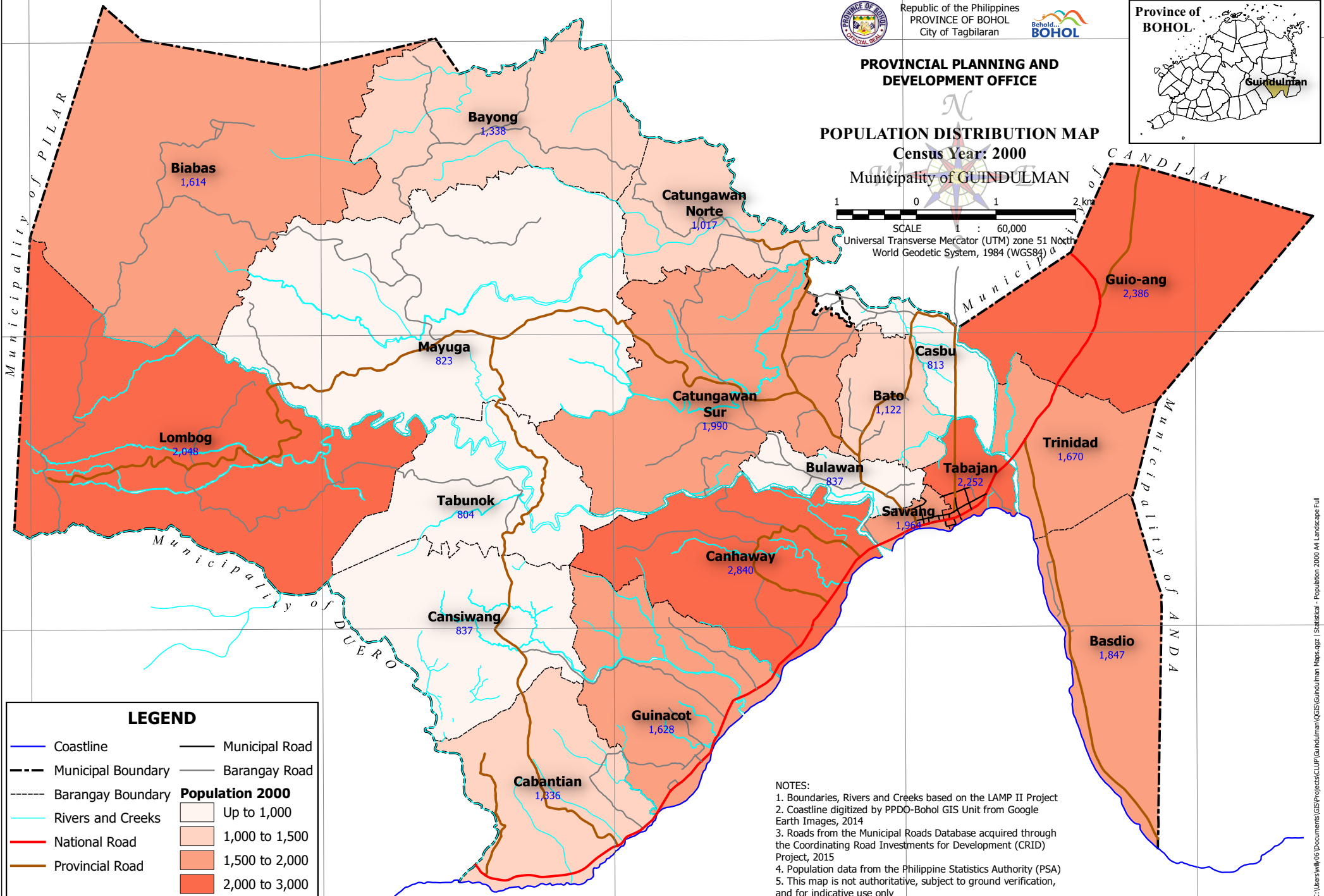
POPULATION DISTRIBUTION MAP

Census Year: 2000

Municipality of GUINDULMAN



SCALE 1 : 60,000
Universal Transverse Mercator (UTM) zone 51 North
World Geodetic System, 1984 (WGS84)



LEGEND	
	Coastline
	Municipal Boundary
	Barangay Boundary
	Rivers and Creeks
	National Road
	Provincial Road
	Municipal Road
	Barangay Road
Population 2000	
	Up to 1,000
	1,000 to 1,500
	1,500 to 2,000
	2,000 to 3,000

- NOTES:
1. Boundaries, Rivers and Creeks based on the LAMP II Project
 2. Coastline digitized by PPDO-Bohol GIS Unit from Google Earth Images, 2014
 3. Roads from the Municipal Roads Database acquired through the Coordinating Road Investments for Development (CRID) Project, 2015
 4. Population data from the Philippine Statistics Authority (PSA)
 5. This map is not authoritative, subject to ground verification, and for indicative use only

124°23'0" 124°25'0" 124°27'0" 124°29'0" 124°31'0"